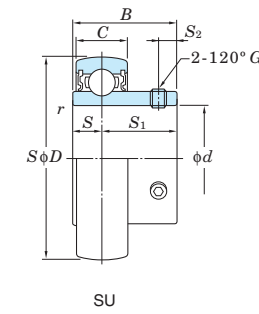
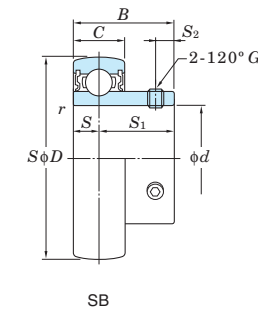
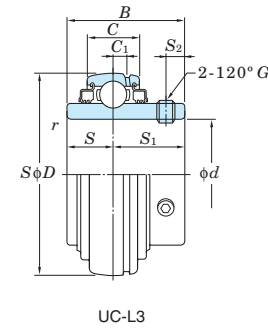
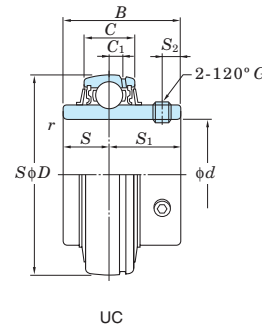


Ball bearing inserts

UC, SB, SU  
Cylindrical bore (with set screws)  
d 8 ~ (30) mm



Shaft Dia. mm inch d	Dimensions						Basic Load Ratings kN		Factor fo	Bearing No.		Dimensions						Set Screw Brg. Bore G		Mass kg
	D mm inch	B mm inch	C mm inch	r (min.) mm inch	Cr	Cor	Standard	L3 Type		C1 mm inch	S mm inch	S1 mm inch	S2 mm inch	mm	inch					
8	22 0.866	12 0.472	7 0.276	0.3 0.012	3.27	1.37	12.4	SU08	-	-	-	-	-	-	-	M3x0.35	-	0.012		
10	26 1.024	15 0.591	8 0.315	0.3 0.012	4.55	1.95	12.3	SU000	-	-	-	-	-	-	-	M3x0.35	-	0.024		
12	28 1.102	15 0.591	8 0.315	0.3 0.012	5.10	2.40	13.2	SU001	-	-	-	-	-	-	-	M3x0.35	-	0.026		
	40 1.575	22 0.866	12 0.472	0.6 0.024	9.55	4.80	13.2	SB201	-	-	-	-	-	-	-	M5x0.5	-	0.10		
-	47 1.850	31 1.220	16 0.630	0.6 0.024	12.8	6.65	13.2	UC201	UC201L2	4	0.157	12.7	0.500	18.3	0.720	5	0.197	M6x0.75	-	0.21
	40 1.575	22 0.866	12 0.472	0.6 0.024	9.55	4.80	13.2	SB201-8	-	-	-	-	-	-	-	-	No.10-32UNF	0.10		
-	47 1.850	31 1.220	16 0.630	0.6 0.024	12.8	6.65	13.2	UC201-8	UC201-8L2	4	0.157	12.7	0.500	18.3	0.720	5	0.197	-	0.21	
	32 1.260	16.5 0.650	9 0.354	0.3 0.012	5.60	2.85	13.9	SU002	-	-	-	-	-	-	-	M4x0.5	-	0.038		
15	40 1.575	22 0.866	12 0.472	0.6 0.024	9.55	4.80	13.2	SB202	-	-	-	-	-	-	-	M5x0.5	-	0.10		
	47 1.850	31 1.220	16 0.630	0.6 0.024	12.8	6.65	13.2	UC202	UC202L2	4	0.157	12.7	0.500	18.3	0.720	5	0.197	M6x0.75	-	0.19
-	40 1.575	22 0.866	12 0.472	0.6 0.024	9.55	4.80	13.2	SB202-10	-	-	-	-	-	-	-	-	No.10-32UNF	0.10		
	47 1.850	31 1.220	16 0.630	0.6 0.024	12.8	6.65	13.2	UC202-10	UC202-10L2	4	0.157	12.7	0.500	18.3	0.720	5	0.197	-	0.19	
17	35 1.378	17.5 0.689	10 0.394	0.3 0.012	6.00	3.25	14.4	SU003	-	-	-	-	-	-	-	M4x0.5	-	0.050		
	40 1.575	22 0.866	12 0.472	0.6 0.024	9.55	4.80	13.2	SB203	-	-	-	-	-	-	-	M5x0.5	-	0.10		
-	47 1.850	31 1.220	16 0.630	0.6 0.024	12.8	6.65	13.2	UC203	UC203L2	4	0.157	12.7	0.500	18.3	0.720	5	0.197	M6x0.75	-	0.18
	47 1.850	25 0.984	14 0.551	1 0.039	12.8	6.65	13.2	SB204-12	-	-	-	-	-	-	-	-	1/4-28UNF	0.15		
-	47 1.850	31 1.220	16 0.630	1 0.039	12.8	6.65	13.2	UC204-12	UC204-12L2	4	0.157	12.7	0.500	18.3	0.720	5	0.197	-	0.16	
	42 1.654	21 0.827	12 0.472	0.6 0.024	9.40	5.05	13.9	SU004	-	-	-	-	-	-	-	M5x0.5	-	0.080		
20	47 1.850	25 0.984	14 0.551	1 0.039	12.8	6.65	13.2	SB204	-	-	-	-	-	-	-	M6x0.75	-	0.15		
	47 1.850	31 1.220	16 0.630	1 0.039	12.8	6.65	13.2	UC204	UC204L2	4	0.157	12.7	0.500	18.3	0.720	5	0.197	M6x0.75	-	0.16
-	52 2.047	27 1.063	15 0.591	1 0.039	14.0	7.85	13.9	SB205-14	-	-	-	-	-	-	-	-	1/4-28UNF	0.18		
	52 2.047	34.1 1.343	17 0.669	1 0.039	14.0	7.85	13.9	UC205-14	UC205-14L2	5	0.197	14.3	0.563	19.8	0.780	5.5	0.217	-	0.23	
-	52 2.047	27 1.063	15 0.591	1 0.039	14.0	7.85	13.9	SB205-15	-	-	-	-	-	-	-	-	1/4-28UNF	0.18		
	52 2.047	34.1 1.343	17 0.669	1 0.039	14.0	7.85	13.9	UC205-15	UC205-15L2	5	0.197	14.3	0.563	19.8	0.780	5.5	0.217	-	0.21	
25	47 1.850	22 0.866	12 0.472	0.6 0.024	10.1	5.85	14.5	SU005	-	-	-	-	-	-	-	M5x0.5	-	0.10		
	52 2.047	27 1.063	15 0.591	1 0.039	14.0	7.85	13.9	SB205	-	-	-	-	-	-	-	M6x0.75	-	0.18		
	52 2.047	34.1 1.343	17 0.669	1 0.039	14.0	7.85	13.9	UC205	UC205L2	5	0.197	14.3	0.563	19.8	0.780	5.5	0.217	M6x0.75	-	0.20
	62 2.441	38 1.496	22 0.866	1.1 0.043	21.2	10.9	12.6	UC305	-	6	0.236	15	0.591	23	0.906	6	0.236	M6x0.75	-	0.45
-	62 2.441	38.1 1.500	19 0.748	1 0.039	19.5	11.3	13.9	UCX05	UCX05L3	5	0.197	15.9	0.626	22.2	0.874	6	0.236	M6x0.75	-	0.39
	52 2.047	27 1.063	15 0.591	1 0.039	14.0	7.85	13.9	SB205-16	-	-	-	-	-	-	-	-	1/4-28UNF	0.18		
-	52 2.047	34.1 1.343	17 0.669	1 0.039	14.0	7.85	13.9	UC205-16	UC205-16L2	5	0.197	14.3	0.563	19.8	0.780	5.5	0.217	-	0.20	
	62 2.441	38 1.496	22 0.866	1.1 0.043	21.2	10.9	12.6	UC305-16	-	6	0.236	15	0.591	23	0.906	6	0.236	M6x0.75	-	0.44
-	62 2.441	38.1 1.500	19 0.748	1 0.039	19.5	11.3	13.9	UCX05-16	UCX05-16L3	5	0.197	15.9	0.626	22.2	0.874	6	0.236	-	0.38	
	62 2.441	30 1.181	16 0.630	1 0.039	19.5	11.3	13.9	SB206-18	-	-	-	-	-	-	-	-	1/4-28UNF	0.27		
-	62 2.441	38.1 1.500	19 0.748	1 0.039	19.5	11.3	13.9	UC206-18	UC206-18L2	5	0.197	15.9	0.626	22.2	0.874	6	0.236	-	0.34	
	55 2.165	24.5 0.965	13 0.512	1 0.039	13.2	8.25	14.7	SU006	-	-	-	-	-	-	-	M5x0.5	-	0.15		
30	62 2.441	30 1.181	16 0.630	1 0.039	19.5	11.3	13.9	SB206	-	-	-	-	-	-	-	M6x0.75	-	0.27		
	62 2.441	38.1 1.500	19 0.748	1 0.039	19.5	11.3	13.9	UC206	UC206L3	5	0.197	15.9	0.626	22.2	0.874	6	0.236	M6x0.75	-	0.32
	72 2.835	42.9 1.689	20 0.787	1 0.039	25.7	15.4	13.9	UCX06	UCX06L3	5.5	0.217	17.5	0.689	25.4	1.000	6.5	0.256	M8x1	-	0.58
	72 2.835	43 1.693	24 0.945	1.1 0.043	26.7	15.0	13.3	UC306	-	6.5	0.256	17	0.669	26	1.024	6	0.236	M6x0.75	-	0.56
-	62 2.441	30 1.181	16 0.630	1 0.039	19.5	11.3	13.9	SB206-19	-	-	-	-	-	-	-	-	1/4-28UNF	0.27		
	62 2.441	38.1 1.500	19 0.748	1 0.039	19.5	11.3	13.9	UC206-19	UC206-19L2	5	0.197	15.9	0.626	22.2	0.874	6	0.236	-	0.32	
-	72 2.835	42.9 1.689	20 0.787	1 0.039	25.7	15.4	13.9	UCX06-19	UCX06-19L3	5.5	0.217	17.5	0.689	25.4	1.000	6.5	0.256	-	0.58	
	62 2.441	30 1.181	16 0.630	1 0.039	19.5	11.3	13.9	SB206-20	-	-	-	-	-	-	-	-	1/4-28UNF	0.27		
-	62 2.441	38.1 1.500	19 0.748	1 0.039	19.5	11.3	13.9	UC206-20	UC206-20L2	5	0.197	15.9	0.626	22.2	0.874	6	0.236	-	0.30	
	72 2.835	42.9 1.689	20 0.787	1 0.039	25.7	15.4	13.9	UCX06-20	UCX06-20L3	5.5	0.217	17.5	0.689	25.4	1.000	6.5	0.256	-	0.55	
-	72 2.835	32 1.260	17 0.669	1.1 0.043	25.7	15.4	13.9	SB207-20	-	-	-	-	-	-	-	-	1/4-28UNF	0.42		
	72 2.835	42.9 1.689	20 0.787	1.1 0.043	25.7	15.4	13.9	UC207-20	UC207-20L3	5.5	0.217	17.5	0.689	25.4	1.000	6.5	0.256	-	0.54	
-	72 2.835	42.9 1.689	20 0.787	1.1 0.043	25.7	15.4	13.9	UC207-21	UC207-21L3	5.5	0.217	17.5	0.689	25.4	1.000	6.5	0.256	-	0.51	

Remarks 1. SU type product is the clean series ball bearing for unit.  
2. From UC201 to 205 are the double seal type products (L2).